

# ENVIRONMENTAL PROMOTIONAL POLICY DOCUMENT

**Sharda Education Society's**



## **Anand Vishwa Gurukul College of Law**

**Near Mental Hospital, Opp. ACC Cement Colony,  
Thane**

*(Affiliated to the University of Mumbai, Mumbai)*



  
WC PRINCIPAL  
ANAND VISHWA GURUKUL COLLEGE OF LAW, THANE

## ENVIRONMENTAL PROMOTIONAL POLICY DOCUMENT

At Anand Vishwa Gurukul College of Law we understand our obligation to contribute to environmental sustainability and energy conservation. This policy outlines our commitment to reducing our environmental impact and increasing energy efficiency throughout our institution. We are committed to environment and energy initiatives through the following practices:

### 1. GREEN ENERGY AND ENVIRONMENT AUDIT

The College undertakes a Green Energy and Environment Audit to monitor and evaluate its environmental effect, energy use, and sustainability practises. This Audit seeks to identify areas where the institution may enhance resource efficiency, lower its carbon footprint, and implement more environmentally friendly practises. The Audit encompasses range of important areas such as Environmental System, Water Management, Waste Generation & Management, Infrastructure & Safety, Green Culture and Renewable Energy, all of which play an important role in driving positive change within the College and assisting it in becoming more environmentally conscious and sustainable. The Report helps the College to make informed decisions, set realistic targets, and execute effective methods to enhance its environmental performance and contribute to a greener future.

### 2. ELECTRICAL AUDIT

The college conducts an Electrical Audit to assess and optimize its electrical systems, usage, and efficiency. This audit is designed to identify areas where the college can improve its electrical infrastructure, reduce energy consumption, enhance safety, and achieve cost savings. The Electrical Audit is critical to increasing energy efficiency, lowering expenses, improving safety, and encouraging sustainability within the College premises. The report and recommendations help the Institution to establish a more efficient, safe, and environmentally friendly campus environment, thus contribute to a more sustainable, forward-thinking, and prosperous institution.

### 3. GREEN CAMPUS INITIATIVES

Green campus initiatives include a variety of environmentally friendly practises aimed at building a sustainable and environmentally friendly campus environment. These initiatives play a pivotal role in fostering a more sustainable, responsible, and resilient institution. By adopting eco-friendly practices, the Institution contributes to environmental protection,



2 | Page  
  
I/C PRINCIPAL  
ANAND VISHWA GURUKUL COLLEGE OF LAW, THANE

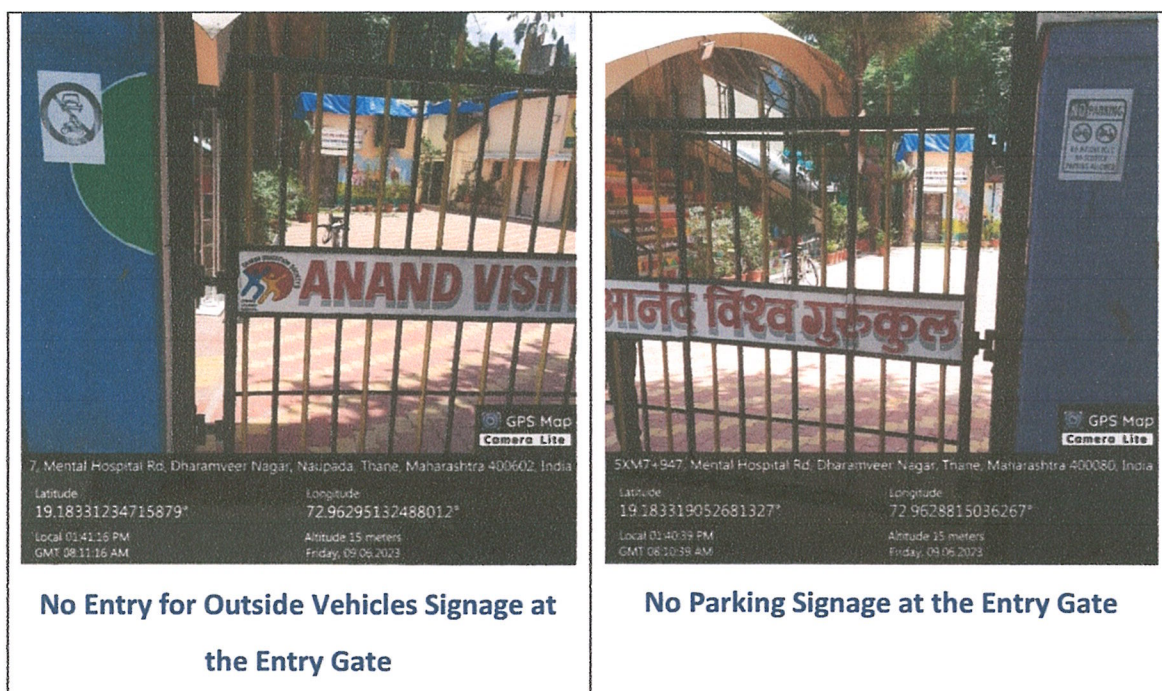


## ENVIRONMENTAL PROMOTIONAL POLICY DOCUMENT

social well-being, and economic stability, while also nurturing a culture of sustainability that equips our students at a behavioural level with the knowledge, values and skills needed to address complex environmental and social issues, shaping a brighter and more sustainable future for all.

### A. Prohibition to Outside Vehicles in the College Premises:

Restricting entry to outside vehicles from entering the campus helps reduce air pollution and greenhouse gas emissions, contributing to improved air quality and the institution's commitment to sustainability. It further encourages the students, faculty and staff to use public transportation, biking, walking, or carpooling thus promoting sustainable commuting options and reduces the institution's carbon footprint.



### B. Pedestrian Friendly Campus:

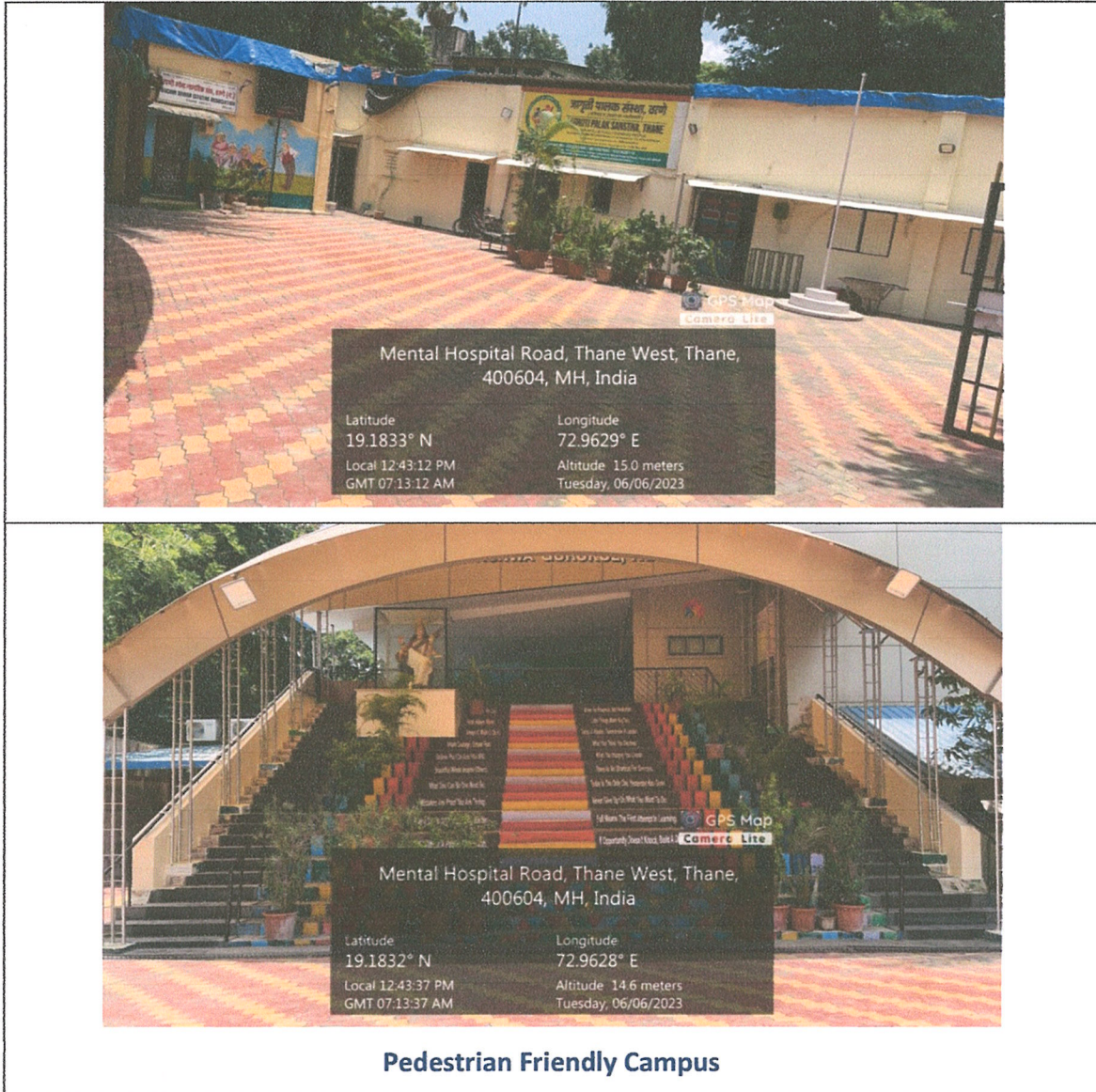
Restricting vehicle access creates a safer campus environment by reducing traffic congestion and potential accidents, allowing for safer pedestrian movement. A pedestrian friendly campus promotes a sense of community and encourages walking, cycling, and other sustainable modes of transportation.



*Shubh*  
I/C PRINCIPAL  
ANAND VISHWA GURUKUL COLLEGE OF LAW, THANE



## ENVIRONMENTAL PROMOTIONAL POLICY DOCUMENT



### C. Prohibition on Single Use Plastic

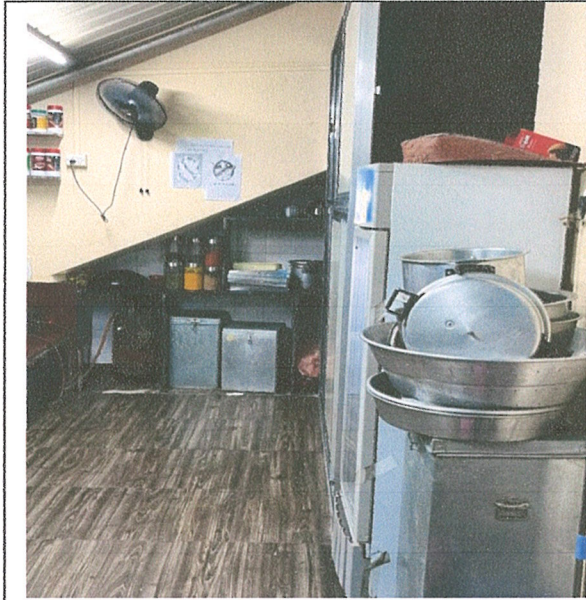
Banning the use of single-use plastics on campus minimizes plastic waste generation, helping to reduce litter and the environmental impact of plastic pollution. It also encourages responsible consumption habits among the campus community. By prohibiting single-use plastics, the institution sends a strong message about its commitment to environmental sustainability and sets a positive example for students, faculty, and staff.



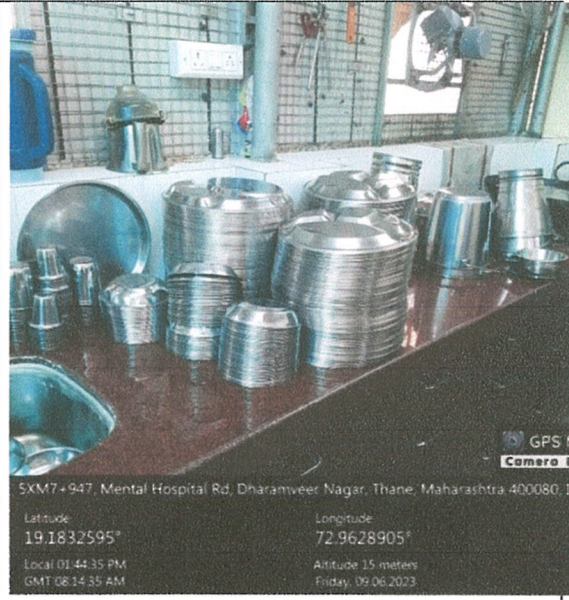
*SRM*  
I/C PRINCIPAL  
ANAND VISHWA GURUKUL COLLEGE OF LAW, THANE



## ENVIRONMENTAL PROMOTIONAL POLICY DOCUMENT



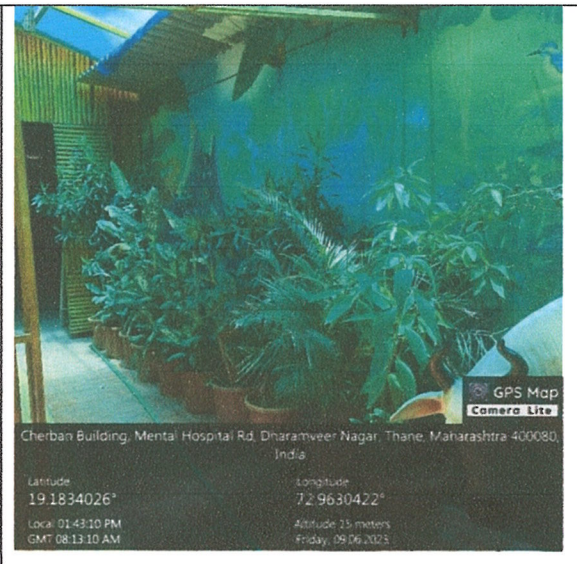
**Storage of groceries in metal containers and cooking utensils**



**Use of steel utensils to serve food in the canteen**

### D. Indoor Plants and Trees on the Campus

Due to space constraints, it is not feasible for the institution to have many trees on the campus. However, there are many indoor plants potted within the institution to maintain optimum green cover. These indoor plants help to maintain a refreshing and healthy environment for the students and staff. They contribute to improving air quality by absorbing carbon dioxide and releasing oxygen through the process of photosynthesis. Indoor plants also help in reducing indoor air pollutants.



*[Signature]*  
I/C PRINCIPAL  
ANAND VISHWA GURUKUL COLLEGE OF LAW, THANE



## ENVIRONMENTAL PROMOTIONAL POLICY DOCUMENT



### 4. BEYOND CAMPUS ENVIRONMENT PROTECTIONACTIVITIES

The institute runs a number of environmental awareness projects. These initiatives not only provide a forum for students to showcase their talents and ideas, but they also motivate them to participate actively in environmental conservation actions. Through these events, Anand Vishwa Gurukul College of Law creates an environmental consciousness culture and motivates students to become change agents in their communities and beyond.

#### A. Tree Plantation Programmes:

The College organizes Tree Plantation Programmes to promote environmental awareness in the community and contribute to the ecological well-being of the city. The Tree Plantation Programmes organised by the college have several notable benefits and outcomes that



  
I/C PRINCIPAL  
ANAND VISHWA GURUKUL COLLEGE OF LAW, THANE

## ENVIRONMENTAL PROMOTIONAL POLICY DOCUMENT

combine education, community engagement, legal collaboration, and ecological restoration to create a positive and lasting impact on the local environment and the city's ecological health.

### **B. Seminars and Informative Sessions:**

Seminars and informative sessions are critical for engaging the larger community, raising awareness, and pushing good change. These initiatives broaden the institution's reach and effect while encouraging accountability and teamwork. It provides information, resources, and a shared vision for a sustainable future to communities. These activities create collaboration among the institution, local organisations, and citizens, resulting in a beneficial influence that reaches well beyond the institution's gates.

### **C. Contests:**

Contests are interesting and effective instruments for raising awareness, inspiring action, and cultivating a feeling of community connection. Contests provide a fun and rewarding method for participants to contribute to environmental sustainability while also fostering innovation, teamwork, and behaviour change. They give a dynamic and participatory opportunity for people, families, and communities to become involved in environmental promotion. They stimulate people's internal drive, boost creativity, and promote positive behaviour change.



  
I/C PRINCIPAL  
ANAND VISHWA GURUKUL COLLEGE OF LAW, THANE